

FIND YOUR FOREVER HOME WITH US



*Sadie  
Heights* 





# *Our* STORY

WCH Homes is a family owned and operated company for more than 20 years. We are one of the fastest growing home builders in the Middle Georgia area. Quality customer satisfaction is our #1 priority.

*Creating the perfect home is key.*

## *Perry, Georgia* HIGHLIGHTS

Sadie Heights is located just minutes from downtown Perry, GA



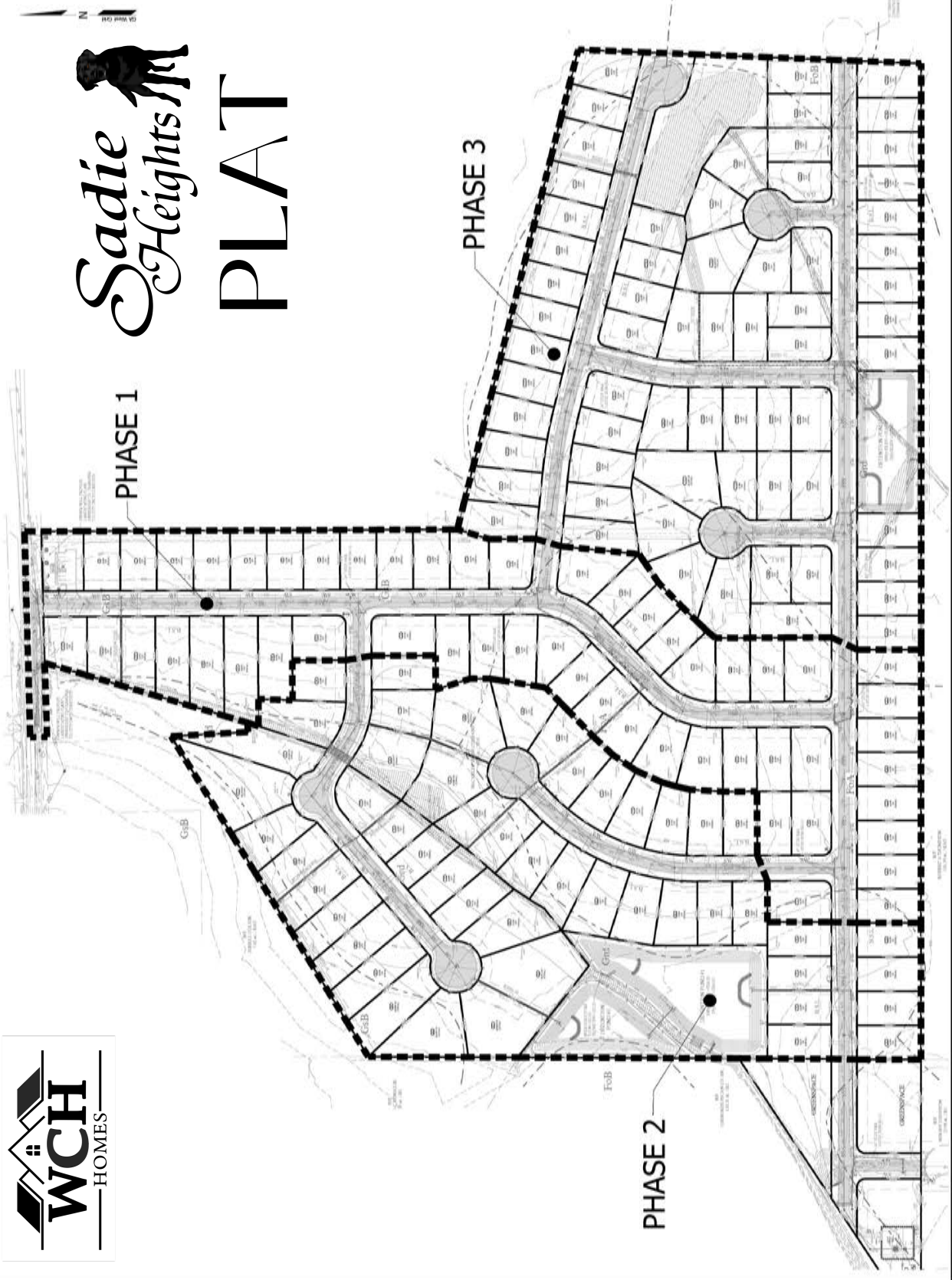
### Heart of Georgia

Nestled in the heart of Georgia lies the quaint but thriving city of Perry. Perry has been able to capitalize on proximity to Robins Air Force Base, excellent schools, unique downtown, and location in transforming from a small town to a vibrant and growing community. Perry is home of the Georgia National Fair and holds events like the Perry Music Festival, Food Truck Fridays, and the annual Perry Buzzard Drop. Perry is truly where Georgia comes together.





# Sadie Heights PLAT



**LAND ENGINEERING**  
1802 S. 28th Street, Suite 100  
Tomball, TX 77375  
Tel: 281.254.4500, Fax: 281.254.4501  
www.landengineering.com

**PRELIMINARY  
NOT FOR RECORD  
OR CONSTRUCTION**

Know what's below.  
Call before you dig.  
**811**  
Call 811  
or visit [www.811.com](http://www.811.com)

Project Number: 13-00-002  
Owner: LEE WINGATE  
Submittal:  
No. Date Description  
Revisions:  
No. Date Description  
Checked / Drawn:  
Date: 10/10/2013  
Project Name:  
SADIE HEIGHTS SUBDIVISION  
Project Location:  
KINGS CHURCH ROAD  
KINGSTON, GA 30144  
Section: 30TH  
County: HOUSTON  
State: GEORGIA  
Drawing Scale:  
Sheet Title:  
Graphic Scale: Feet  
1" = 200'

**PHASING EXHIBIT**

Sheet Number	Total Sheets	Revision
1	1	



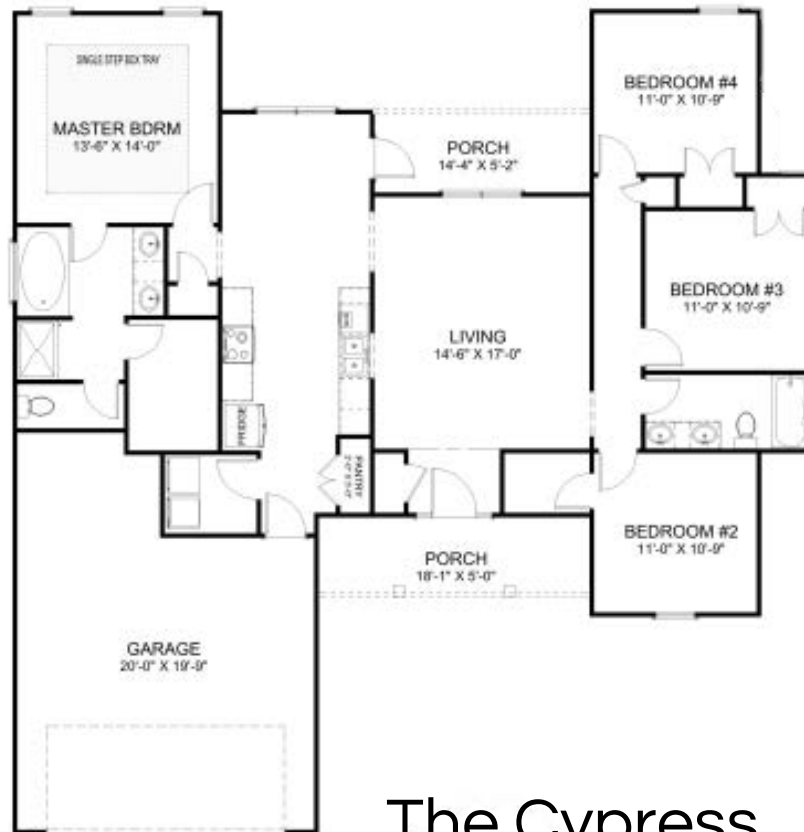
# THE BRASSTOWN FLOORPLAN



The Brasstown

Our Brasstown Plan is a 1432 square foot home with a rocking chair front porch . 3 bedroom, 2 bath open floor plan to include a large sit down island between the kitchen and a 15 x 18 living area. The Kitchen has granite countertops & appliances, the dinette is large with access to the covered back patio. The master bedroom is roomy with a large closet, bathroom with a double sink vanity, marble countertops, a garden tub and a separate shower. 2 car garage with windowed garage door and vinyl siding make up this beautiful home.

# THE CYPRESS FLOORPLAN



The Cypress

"The Cypress" is a great split bedroom floor plan. 1582 square feet, 4 bedrooms & 2 full baths. Open Concept living with a beautiful kitchen and large master suite. Standard features include: 3 Zone Sprinkler System, 10 Pallets of Centipede Sod, LVP Wood Flooring in all main living areas, Granite Countertops in Kitchen, Stainless Steel GE Appliances, Marble Countertops in Bathrooms.

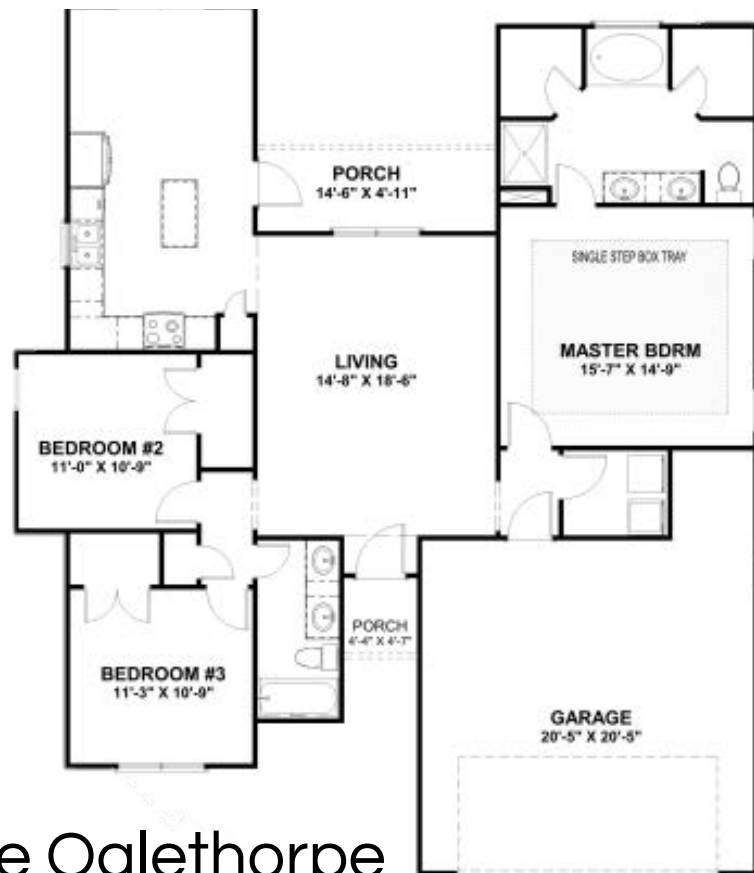
# THE LILY FLOORPLAN



## The Lily

The Lily Plan, with 1528 square feet, is a 4 bedroom, 2 bath open floor plan with a "U" shaped kitchen and a 17 x 14 living area. The kitchen has a working island, granite countertops & stainless steel appliances. The dinette is large with access to the covered back patio. The master bedroom is roomy with a large closet, bathroom with a double sink vanity, marble countertops, a garden tub and a separate shower. A two car garage with windowed garage door and vinyl siding make up this beautiful home.

# THE OGLETHORPE FLOORPLAN



## The Oglethorpe

The Oglethorpe Plan is a 1431 square foot home with a 3 bedroom, 2 bath open floor plan to include a 15 x 18 living area. The kitchen has granite countertops & stainless steel appliances, The dinette is large with access to the covered back patio. The master bedroom is roomy with a large closet, bathroom with a double sink vanity, marble countertops, a garden tub and a separate shower. 2 car garage with windowed garage door and vinyl siding make up this beautiful home.

# THE PINE FLOORPLAN



## The Pine

"The Pine" is a great split bedroom floor plan. 1518 square feet, 4 bedrooms & 2 full baths. Open Concept living with a beautiful kitchen and large master suite. Standard features include: 3 Zone Sprinkler System, 10 Pallets of Centipede Sod, LVP Wood Flooring in all main living areas, Granite Countertops in Kitchen, Stainless Steel GE Appliances, Marble Countertops in Bathrooms.





*Sadie Heights* 

# *Our* PROCESS



1

## Meeting our clients

After making the decision to build a new home, you will speak to one of our representatives who will help you decide what your budget is and where exactly you want to build. We have 5 realtors who can help make this process easy and can answer any questions and concerns you have about building your new home.



2

## Selecting a Lot and Creating Your Dream Home

After deciding where you'd like to build, you will be able to select the floor plan and lot that you want and work with our designers about everything you want in a home. From exterior to interior, you make every decision on what you want for your dream home. After you've made your selections, you sit back while we build your home. Your realtor will be able to keep you updated on the progress and any questions you have.



3

## Closing on Your New Home

Your house is built and it's time to get your keys and close. You will be provided with a closing folder filled with info about your home, keep this folder to refer back to as you may need to know the color of your walls in a few years. All contact information will be provided in the folder for any future need.

Your home is finished and now you can relax... after you move in and unpack everything, of course.



Misty Wingate



**WRG**  
Real Estate

☎ 478-256-0395

✉ mwingate73@gmail.com



Ashleigh Haller



☎ 478-918-5400

✉ ashleigh@thehallerteam.com



Ilia Durham



SCAN ME



☎ 478-808-1298

✉ iliadurham.realtor.com



Jamie Moorman



☎ 478-808-4765

✉ jamie@jamiemoormanteam.com



Ann Edwards



SCAN ME



**FICKLING**  
& COMPANY

☎ 478-973-6333

✉ amenewhomes@gmail.com



Cindy Lasseter-Gibbs



☎ 478-951-3317

✉ cindylassetergibbs@gmail.com

Meet  
**OUR TEAM**



*Our*

# LENDER OF CHOICE

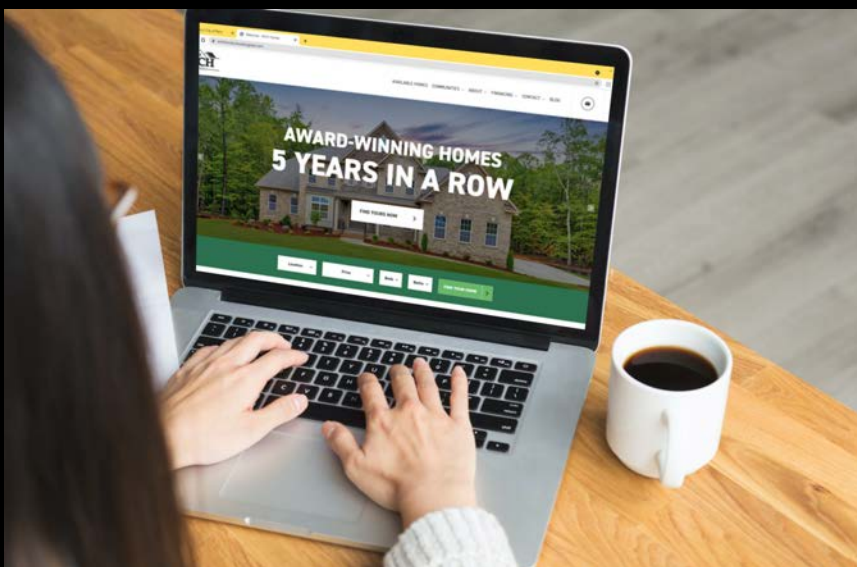
When buying a home with WCH, you have the freedom of choosing your own lender, but we can also help you.



Melissa Gibson  
Branch Manager | NMLS #279702  
New American Funding  
☎ 770-337-8089  
✉ TeamGibson@nafinc.com  
[www.nafhomes.com/MelissaGibson](http://www.nafhomes.com/MelissaGibson)



"My name is Melissa Gibson, and I am proud to work with the community on behalf of New American Funding. As a highly-skilled Branch Manager, NMLS #279702, my goal is to provide the best customer service possible along with knowledgeable, unbiased advice."



*Let's stay in touch*

WCH Homes  
817 GA-247, S  
Unit #10  
Kathleen, GA 31047  
478-322-0028  
[www.wchhome.com](http://www.wchhome.com)

